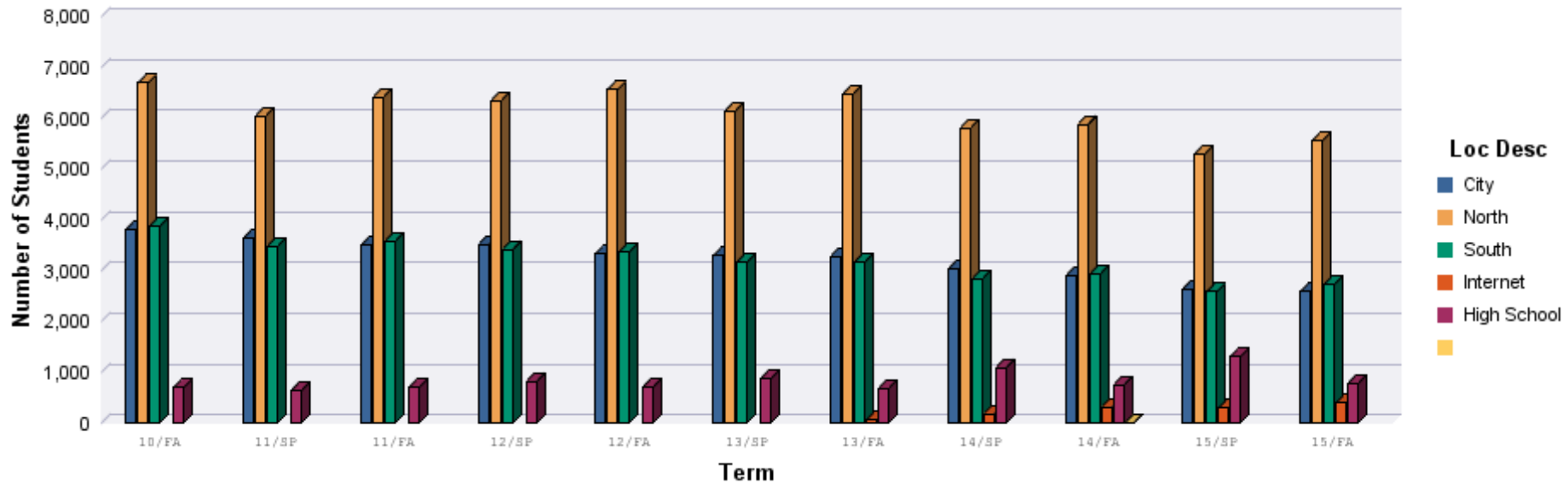


Erie Community College

Term Headcount by Campus Location*

Term	City	North	South	Internet	High School		Headcount
10/FA	3,810	6,690	3,881		703		15,084
11/SP	3,638	6,044	3,481		640		13,803
11/FA	3,495	6,410	3,576		695		14,176
12/SP	3,518	6,331	3,416		818		14,083
12/FA	3,333	6,561	3,376		720		13,990
13/SP	3,285	6,142	3,167		877		13,471
13/FA	3,281	6,466	3,165	57	680		13,649
14/SP	3,025	5,799	2,832	182	1,091		12,929
14/FA	2,888	5,874	2,919	307	744	1	12,733
15/SP	2,636	5,294	2,577	292	1,309		12,108
15/FA	2,577	5,551	2,723	392	779		12,022



*Cross-registered Students Excluded

Erie Community College
Term Headcount by Campus and Gender*

Term	Gender	City	North	South	Internet	High School	Headcount
10/FA	F	2,302	3,276	1,597		429	7,604
	M	1,508	3,414	2,284		274	7,480
10/FA	Total	3,810	6,690	3,881		703	15,084

11/SP	F	2,234	3,039	1,442		395	7,110
	M	1,404	3,005	2,039		245	6,693
11/SP	Total	3,638	6,044	3,481		640	13,803

11/FA	F	2,149	3,229	1,494		411	7,283
	M	1,346	3,181	2,082		284	6,893
11/FA	Total	3,495	6,410	3,576		695	14,176

12/SP	F	2,134	3,186	1,447		444	7,211
	M	1,384	3,145	1,969		374	6,872
12/SP	Total	3,518	6,331	3,416		818	14,083

12/FA	F	2,017	3,213	1,422		410	7,062
	M	1,316	3,348	1,954		310	6,928
12/FA	Total	3,333	6,561	3,376		720	13,990

13/SP	F	1,996	3,076	1,295		488	6,855
	M	1,289	3,066	1,872		389	6,616
13/SP	Total	3,285	6,142	3,167		877	13,471

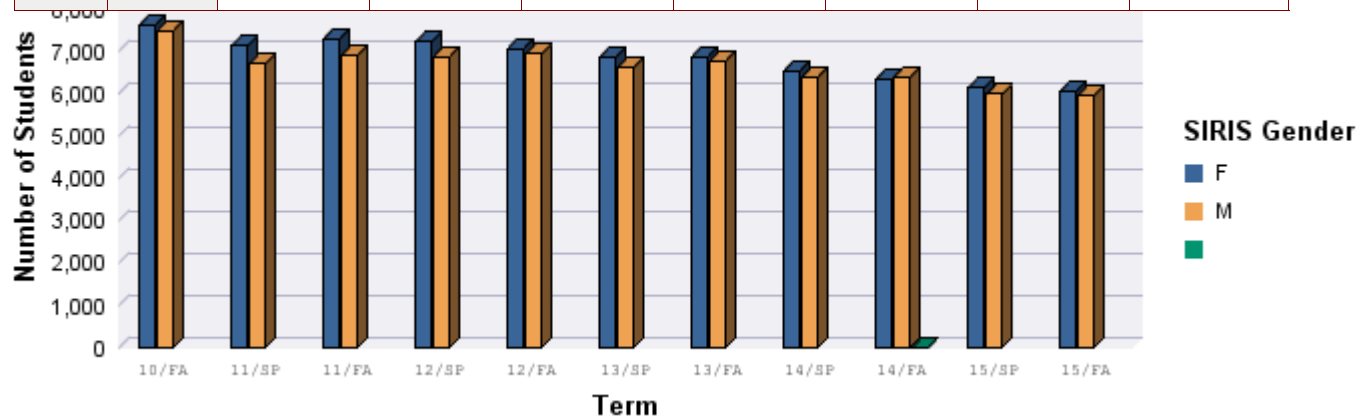
13/FA	F	1,980	3,175	1,285	33	399	6,872
	M	1,301	3,291	1,880	24	281	6,777
13/FA	Total	3,281	6,466	3,165	57	680	13,649

Term	Gender	City	North	South	Internet	High School		Headcount
14/SP	F	1,813	2,838	1,129	108	648		6,536
	M	1,212	2,961	1,703	74	443		6,393
14/SP	Total	3,025	5,799	2,832	182	1,091		12,929

14/FA	F	1,734	2,829	1,127	191	460	1	6,342
	M	1,154	3,043	1,792	116	284		6,389
			2					2
14/FA	Total	2,888	5,874	2,919	307	744	1	12,733

15/SP	F	1,596	2,624	979	179	753		6,131
	M	1,040	2,670	1,598	113	556		5,977
15/SP	Total	2,636	5,294	2,577	292	1,309		12,108

15/FA	F	1,557	2,740	1,049	242	471		6,059
	M	1,020	2,811	1,674	150	308		5,963
15/FA	Total	2,577	5,551	2,723	392	779		12,022



***Cross-registered Students Excluded**

Erie Community College

Term Headcount by Campus and Higher Ed History*

Term	Higher Ed Hist	City	North	South	Internet	High School	Headcount
10/FA	FirstTimers	915	1,533	1,007			3,455
	Transfers	279	617	255			1,151
	Continuing	2,155	3,643	2,163			7,961
	Returning	461	896	456			1,813
	ConcurrentlyHS		1			703	704
10/FA	Total	3,810	6,690	3,881		703	15,084

11/SP	FirstTimers	382	479	258		2	1,121
	Transfers	165	283	135			583
	Continuing	2,720	4,703	2,776			10,199
	Returning	371	579	312			1,262
	ConcurrentlyHS					638	638
11/SP	Total	3,638	6,044	3,481		640	13,803

11/FA	FirstTimers	842	1,516	898			3,256
	Transfers	243	644	278			1,165
	Continuing	2,052	3,514	1,981		1	7,548
	Returning	358	735	419			1,512
	ConcurrentlyHS		1			694	695
11/FA	Total	3,495	6,410	3,576		695	14,176

12/SP	FirstTimers	423	578	293		16	1,310
	Transfers	129	350	132			611
	Continuing	2,669	4,753	2,616		1	10,039
	Returning	297	647	375		6	1,325

Term	Higher Ed Hist	City	North	South	Internet	High School		Headcount
12/SP	ConcurrentlyHS		3			795		798
12/SP	Total	3,518	6,331	3,416		818		14,083

12/FA	FirstTimers	845	1,559	854		2		3,260
	Transfers	239	642	249				1,130
	Continuing	1,899	3,502	1,816		3		7,220
	Returning	350	858	457		5		1,670
	ConcurrentlyHS					710		710
12/FA	Total	3,333	6,561	3,376		720		13,990

13/SP	FirstTimers	382	528	236		19		1,165
	Transfers	140	352	145				637
	Continuing	2,453	4,681	2,472		2		9,608
	Returning	310	581	314		11		1,216
	ConcurrentlyHS					845		845
13/SP	Total	3,285	6,142	3,167		877		13,471

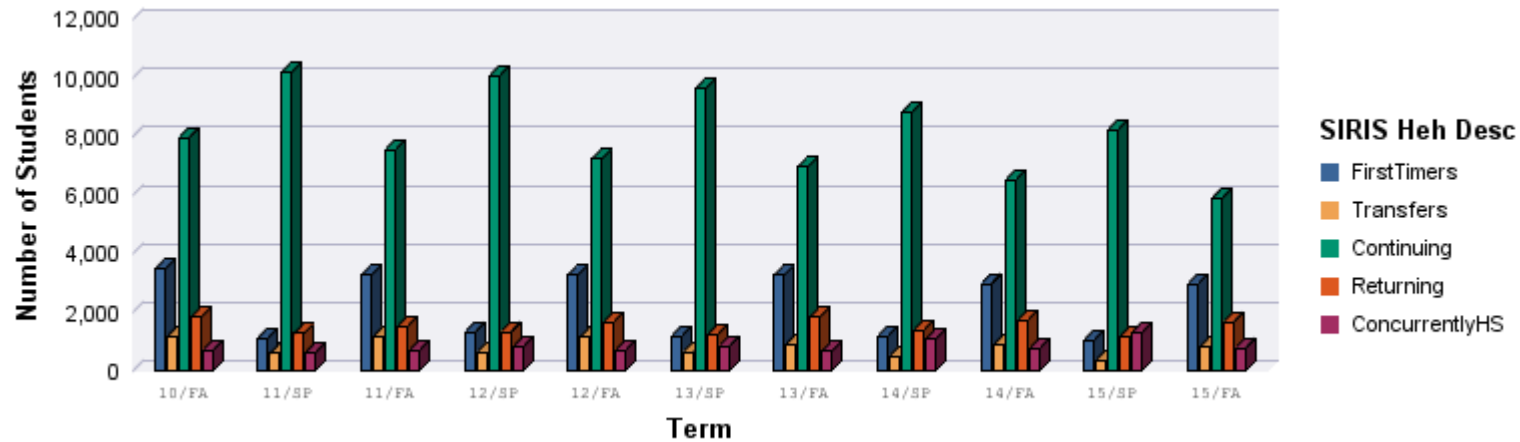
13/FA	FirstTimers	901	1,481	855	18			3,255
	Transfers	193	516	189	12			910
	Continuing	1,796	3,475	1,690	5	2		6,968
	Returning	391	994	431	22	2		1,840
	ConcurrentlyHS					676		676
13/FA	Total	3,281	6,466	3,165	57	680		13,649

14/SP	FirstTimers	383	491	221	61	19		1,175
	Transfers	107	238	118	33			496
	Continuing	2,205	4,391	2,174	35	2		8,807
	Returning	330	679	318	53	1		1,381
	ConcurrentlyHS			1		1,069		1,070
14/SP	Total	3,025	5,799	2,832	182	1,091		12,929

Term	Higher Ed Hist	City	North	South	Internet	High School		Headcount
14/FA	FirstTimers	757	1,349	767	91	1		2,965
	Transfers	152	488	165	50			855
	Continuing	1,596	3,228	1,548	108	3	1	6,484
	Returning	383	809	438	58	6		1,694
	ConcurrentlyHS			1		734		735
14/FA	Total	2,888	5,874	2,919	307	744	1	12,733

15/SP	FirstTimers	339	461	190	52	1		1,043
	Transfers	75	204	65	18			362
	Continuing	1,953	4,051	2,060	163	2		8,229
	Returning	269	578	261	59	2		1,169
	ConcurrentlyHS			1		1,304		1,305
15/SP	Total	2,636	5,294	2,577	292	1,309		12,108

15/FA	FirstTimers	684	1,354	772	131			2,941
	Transfers	129	470	144	41			784
	Continuing	1,398	2,916	1,405	139			5,858
	Returning	366	811	402	81			1,660



**Cross-registered Students Excluded*

Erie Community College

Term Headcount by Campus and Full/Part-time*

Term	Full or Part-time	City	North	South	Internet	High School		Headcount
10/FA	Full-Time (GE 12 Creds)	2,879	4,553	2,865				10,297
	Part-Time (LT 12 Creds)	931	2,137	1,016		703		4,787
10/FA	Total	3,810	6,690	3,881		703		15,084

11/SP	Full-Time (GE 12 Creds)	2,701	3,957	2,502				9,160
	Part-Time (LT 12 Creds)	937	2,087	979		640		4,643
11/SP	Total	3,638	6,044	3,481		640		13,803

11/FA	Full-Time (GE 12 Creds)	2,631	4,183	2,542				9,356
	Part-Time (LT 12 Creds)	864	2,227	1,034		695		4,820
11/FA	Total	3,495	6,410	3,576		695		14,176

12/SP	Full-Time (GE 12 Creds)	2,638	3,993	2,357		1		8,989
	Part-Time (LT 12 Creds)	880	2,338	1,059		817		5,094
12/SP	Total	3,518	6,331	3,416		818		14,083

12/FA	Full-Time (GE 12 Creds)	2,483	4,269	2,440		1		9,193
	Part-Time (LT 12 Creds)	850	2,292	936		719		4,797
12/FA	Total	3,333	6,561	3,376		720		13,990

13/SP	Full-Time (GE 12 Creds)	2,396	3,850	2,234		1		8,481
	Part-Time (LT 12 Creds)	889	2,292	933		876		4,990
13/SP	Total	3,285	6,142	3,167		877		13,471

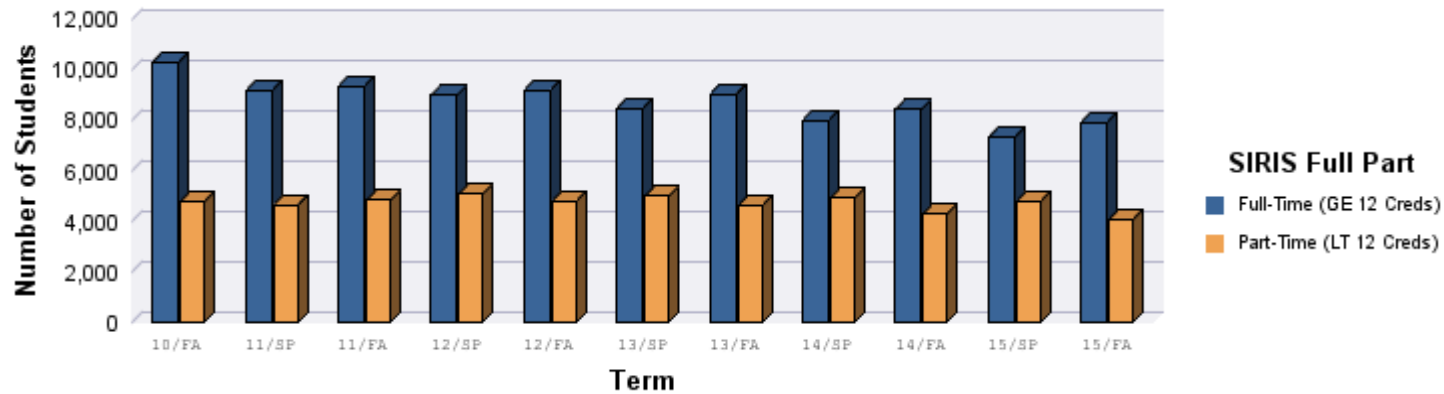
13/FA	Full-Time (GE 12 Creds)	2,445	4,228	2,336	30			9,039
	Part-Time (LT 12 Creds)	836	2,238	829	27	680		4,610
13/FA	Total	3,281	6,466	3,165	57	680		13,649

Term	Full or Part-time	City	North	South	Internet	High School		Headcount
14/SP	Full-Time (GE 12 Creds)	2,233	3,671	2,024	81			8,009
	Part-Time (LT 12 Creds)	792	2,128	808	101	1,091		4,920
14/SP	Total	3,025	5,799	2,832	182	1,091		12,929

14/FA	Full-Time (GE 12 Creds)	2,215	3,882	2,185	142			8,424
	Part-Time (LT 12 Creds)	673	1,992	734	165	744	1	4,309
14/FA	Total	2,888	5,874	2,919	307	744	1	12,733

15/SP	Full-Time (GE 12 Creds)	1,892	3,439	1,855	131	1		7,318
	Part-Time (LT 12 Creds)	744	1,855	722	161	1,308		4,790
15/SP	Total	2,636	5,294	2,577	292	1,309		12,108

15/FA	Full-Time (GE 12 Creds)	1,965	3,741	2,048	177			7,931
	Part-Time (LT 12 Creds)	612	1,810	675	215	779		4,091
15/FA	Total	2,577	5,551	2,723	392	779		12,022



**Cross-registered Students Excluded*

Erie Community College
Term Headcount by Campus and Race/Ethnicity*

Term	Race/Ethnicity	City	North	South	Internet	High School	Headcount
10/FA	American Indian/Alaska Native	25	37	35		2	99
	Asian	80	175	27		10	292
	Black/African American	1,418	856	252		13	2,539
	Hispanic	391	229	129		15	764
	Native Hawaiian/Other Pacific Isl	1	4	2			7
	White	1,703	5,088	3,330		644	10,765
	Multi-Race	114	160	60		14	348
	Foreign	21	49	5			75
	UnKnown	57	92	41		5	195
10/FA	Total	3,810	6,690	3,881		703	15,084

11/SP	American Indian/Alaska Native	27	31	23		5	86
	Asian	67	165	22		5	259
	Black/African American	1,336	803	223		28	2,390
	Hispanic	362	203	122		18	705
	Native Hawaiian/Other Pacific Isl	2	5	2		1	10
	White	1,614	4,525	2,965		567	9,671
	Multi-Race	117	145	64		9	335
	Foreign	48	70	10			128
	UnKnown	65	97	50		7	219
11/SP	Total	3,638	6,044	3,481		640	13,803

11/FA	American Indian/Alaska Native	17	27	36		5	85
	Asian	72	153	17		4	246
	Black/African American	1,197	837	201		17	2,252
	Hispanic	369	268	147		22	806

Term	Race/Ethnicity	City	North	South	Internet	High School	Headcount
11/FA	Native Hawaiian/Other Pacific Isl	5	3	1			9
	White	1,517	4,672	2,986		580	9,755
	Multi-Race	149	173	78		12	412
	Foreign	87	112	19		2	220
	UnKnown	82	165	91		53	391
11/FA	Total	3,495	6,410	3,576		695	14,176

12/SP	American Indian/Alaska Native	17	29	30		4	80
	Asian	75	148	25		9	257
	Black/African American	1,259	853	189		29	2,330
	Hispanic	358	276	148		20	802
	Native Hawaiian/Other Pacific Isl	5	4			1	10
	White	1,481	4,566	2,851		667	9,565
	Multi-Race	140	161	74		13	388
	Foreign	101	132	17		2	252
	UnKnown	82	162	82		73	399
12/SP	Total	3,518	6,331	3,416		818	14,083

12/FA	American Indian/Alaska Native	14	32	26		7	79
	Asian	80	154	26		9	269
	Black/African American	1,108	848	194		17	2,167
	Hispanic	327	316	153		19	815
	Native Hawaiian/Other Pacific Isl	5	3	2		1	11
	White	1,464	4,706	2,798		594	9,562
	Multi-Race	138	168	66		16	388
	Foreign	123	164	22			309
	UnKnown	74	170	89		57	390
12/FA	Total	3,333	6,561	3,376		720	13,990

13/SP	American Indian/Alaska Native	15	25	27		2	69
	Asian	70	156	17		9	252

Term	Race/Ethnicity	City	North	South	Internet	High School	Headcount
13/SP	Black/African American	1,084	835	170		32	2,121
	Hispanic	345	297	149		29	820
	Native Hawaiian/Other Pacific Isl	3	3	2		1	9
	White	1,415	4,335	2,627		713	9,090
	Multi-Race	146	177	63		12	398
	Foreign	141	168	24		1	334
	UnKnown	66	146	88		78	378
13/SP	Total	3,285	6,142	3,167		877	13,471

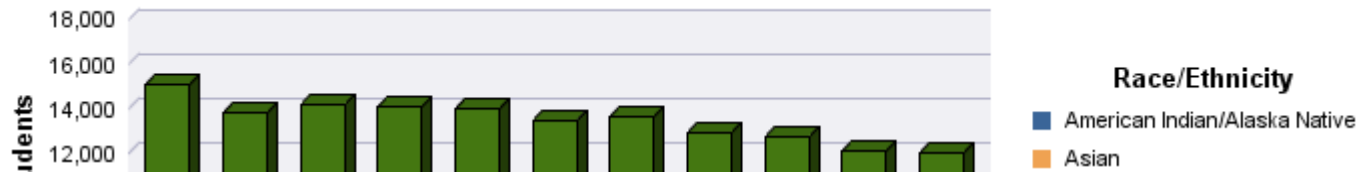
13/FA	American Indian/Alaska Native	21	33	26	1		81
	Asian	71	147	22	3	4	247
	Black/African American	1,157	844	167	8	22	2,198
	Hispanic	348	326	152	2	28	856
	Native Hawaiian/Other Pacific Isl	4	3	1			8
	White	1,317	4,562	2,605	40	544	9,068
	Multi-Race	136	180	70	3	8	397
	Foreign	156	220	32		2	410
	UnKnown	71	151	90		72	384
13/FA	Total	3,281	6,466	3,165	57	680	13,649

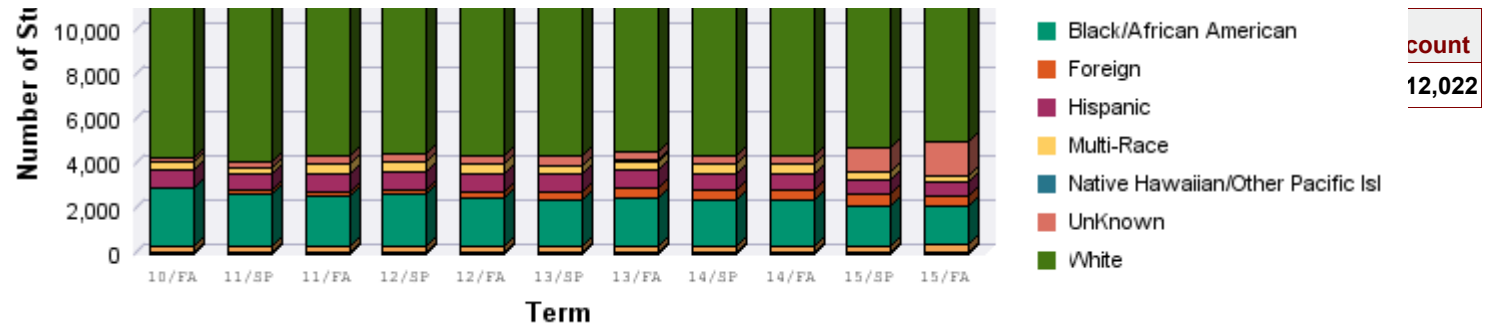
14/SP	American Indian/Alaska Native	19	33	25	1		78
	Asian	72	153	19	4	18	266
	Black/African American	1,098	748	155	21	40	2,062
	Hispanic	290	297	121	13	40	761
	Native Hawaiian/Other Pacific Isl	3	2	1			6
	White	1,175	4,047	2,335	125	861	8,543
	Multi-Race	149	162	75	9	23	418
	Foreign	159	239	32	5	3	438
	UnKnown	60	118	69	4	106	357
14/SP	Total	3,025	5,799	2,832	182	1,091	12,929

Term	Race/Ethnicity	City	North	South	Internet	High School		Headcount
14/FA	American Indian/Alaska Native	20	37	30	1			88
	Asian	69	186	29	9	17		310
	Black/African American	1,035	730	186	28	25		2,004
	Hispanic	276	302	145	16	31		770
	Native Hawaiian/Other Pacific Isl	5	6	1				12
	White	1,139	4,063	2,341	222	576	1	8,342
	Multi-Race	126	168	81	14	10		399
	Foreign	173	261	30	7	4		475
	UnKnown	45	121	76	10	81		333
14/FA	Total	2,888	5,874	2,919	307	744	1	12,733

15/SP	American Indian/Alaska Native	23	35	25		1		84
	Asian	69	180	26	4	14		293
	Black/African American	937	667	158	28	30		1,820
	Hispanic	253	283	128	18	31		713
	Native Hawaiian/Other Pacific Isl	3	7	1				11
	White	978	3,568	2,051	197	533		7,327
	Multi-Race	115	121	63	12	10		321
	Foreign	170	256	30	5	2		463
	UnKnown	88	177	95	28	688		1,076
15/SP	Total	2,636	5,294	2,577	292	1,309		12,108

15/FA	American Indian/Alaska Native	27	36	26	4	1		94
	Asian	93	189	33	8	10		333
	Black/African American	827	673	178	39	19		1,736
	Hispanic	232	258	113	19	19		641
	Native Hawaiian/Other Pacific Isl	3	4	2	1			10
	White	913	3,386	1,855	256	540		6,950
	Multi-Race	115	121	63	12	10		321
	Foreign	170	256	30	5	2		463
	UnKnown	88	177	95	28	688		1,076
	Total	2,636	5,294	2,577	292	1,309		12,108
								282
								417
								1,559





****Cross-registered Students Excluded***

Erie Community College

Term Headcount by Campus and Census Age*

Term	Census Age	City	North	South	Internet	High School		Headcount
10/FA	19 or Less	1,043	1,970	1,497		703		5,213
	20 to 25	1,338	2,624	1,527				5,489
	26 to 30	483	845	311				1,639
	31 to 40	545	707	258				1,510
	41 to 50	293	383	202				878
	51 or Older	108	161	86				355
10/FA	Total	3,810	6,690	3,881		703		15,084

11/SP	19 or Less	865	1,524	1,243		640		4,272
	20 to 25	1,323	2,537	1,435				5,295
	26 to 30	489	838	300				1,627
	31 to 40	559	674	250				1,483
	41 to 50	290	337	181				808
	51 or Older	112	134	72				318
11/SP	Total	3,638	6,044	3,481		640		13,803

11/FA	19 or Less	898	1,953	1,341		695		4,887
	20 to 25	1,260	2,484	1,390				5,134
	26 to 30	495	822	338				1,655
	31 to 40	471	668	233				1,372
	41 to 50	270	340	202				812
	51 or Older	101	143	72				316
11/FA	Total	3,495	6,410	3,576		695		14,176

12/SP	19 or Less	849	1,626	1,146		811		4,432
-------	------------	-----	-------	-------	--	-----	--	-------

Term	Census Age	City	North	South	Internet	igh School		Headcount
12/SP	20 to 25	1,309	2,538	1,398			7	5,252
	26 to 30	506	876	334				1,716
	31 to 40	473	766	277				1,516
	41 to 50	272	381	190				843
	51 or Older	109	144	71				324
12/SP	Total	3,518	6,331	3,416			818	14,083

12/FA	19 or Less	901	1,929	1,327			711	4,868
	20 to 25	1,185	2,552	1,279			7	5,023
	26 to 30	456	836	290				1,582
	31 to 40	418	692	234				1,344
	41 to 50	255	387	172			1	815
	51 or Older	118	165	74			1	358
12/FA	Total	3,333	6,561	3,376			720	13,990

13/SP	19 or Less	772	1,589	1,136			870	4,367
	20 to 25	1,219	2,560	1,266			5	5,050
	26 to 30	485	797	290			2	1,574
	31 to 40	442	671	226				1,339
	41 to 50	235	354	180				769
	51 or Older	132	171	69				372
13/SP	Total	3,285	6,142	3,167			877	13,471

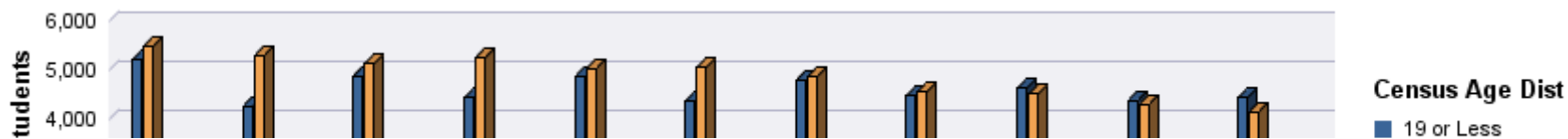
13/FA	19 or Less	899	1,947	1,258	7	676		4,787
	20 to 25	1,122	2,481	1,234	18	2		4,857
	26 to 30	478	802	248	17	1		1,546
	31 to 40	411	687	194	9	1		1,302
	41 to 50	235	388	165	5			793
	51 or Older	136	161	66	1			364
13/FA	Total	3,281	6,466	3,165	57	680		13,649

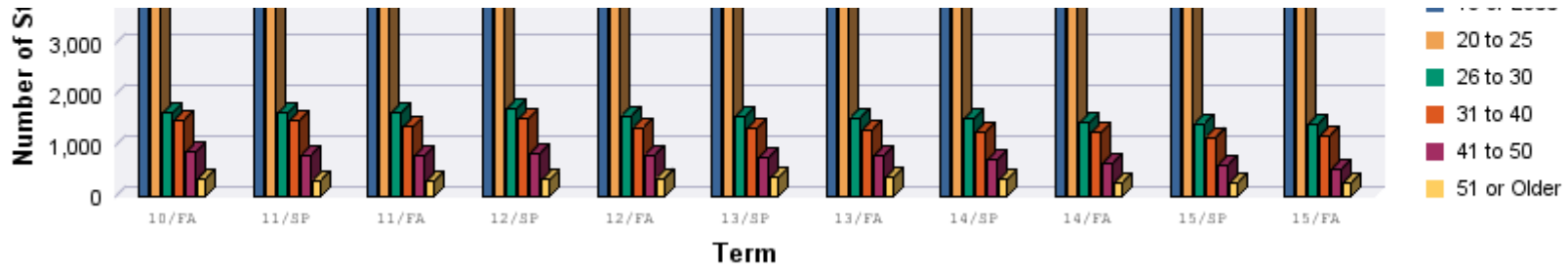
Term	Census Age	City	North	South	Internet	igh School		Headcount
14/SP	19 or Less	754	1,584	1,033	19	1,087		4,477
	20 to 25	1,042	2,306	1,142	72	2		4,564
	26 to 30	470	771	250	42	1		1,534
	31 to 40	400	650	196	34	1		1,281
	41 to 50	220	349	150	12			731
	51 or Older	139	139	61	3			342
14/SP	Total	3,025	5,799	2,832	182	1,091		12,929

14/FA	19 or Less	798	1,811	1,253	28	733		4,623
	20 to 25	973	2,283	1,099	144	5		4,504
	26 to 30	424	727	226	55	3	1	1,436
	31 to 40	377	642	166	59	2		1,246
	41 to 50	213	293	127	17	1		651
	51 or Older	103	118	48	4			273
14/FA	Total	2,888	5,874	2,919	307	744	1	12,733

15/SP	19 or Less	625	1,411	1,002	27	1,309		4,374
	20 to 25	972	2,174	1,021	128			4,295
	26 to 30	413	720	227	58			1,418
	31 to 40	344	603	161	53			1,161
	41 to 50	187	273	123	21			604
	51 or Older	95	113	43	5			256
15/SP	Total	2,636	5,294	2,577	292	1,309		12,108

15/FA	19 or Less	668	1,756	1,207	29	777		4,437
	20 to 25	918	2,119	976	145			4,158
	26 to 30	401	691	225	102	1		1,420
	31 to 40	341	600	177	76			1,194





**Cross-registered Students Excluded*